



# VSPERF Installation Guide

*Release draft (c381375)*

**OPNFV**

May 12, 2016



<b>1</b>	<b>Installing vswitchperf</b>	<b>1</b>
1.1	Supported Operating Systems . . . . .	1
1.2	Supported vSwitches . . . . .	1
1.3	Supported Hypervisors . . . . .	1
1.4	Available VNFs . . . . .	1
1.5	Other Requirements . . . . .	2
1.6	Hugepage Configuration . . . . .	3
<b>2</b>	<b>‘vsperf’ Traffic Gen Guide</b>	<b>5</b>
2.1	Overview . . . . .	5
2.2	Background Information . . . . .	5
2.3	Dummy Setup . . . . .	6
2.4	IXIA Setup . . . . .	7
2.5	Spirent Setup . . . . .	8
2.6	Xena Networks . . . . .	9



## INSTALLING VSWITCHPERF

### 1.1 Supported Operating Systems

- CentOS 7
- Fedora 20
- Fedora 21
- Fedora 22
- RedHat 7.2
- Ubuntu 14.04

### 1.2 Supported vSwitches

The vSwitch must support Open Flow 1.3 or greater.

- OVS (built from source).
- OVS with DPDK (built from source).

### 1.3 Supported Hypervisors

- Qemu version 2.3.

### 1.4 Available VNFs

A simple VNF that forwards traffic through a VM, using:

- DPDK testpmd
- Linux Brigde
- custom l2fwd module

The official VM image is called vloop-vnf and it is available for free download at OPNFV website.

### 1.4.1 vloop-vnf changelog:

- vloop-vnf-ubuntu-14.04\_20160303
  - snmpd service is disabled by default to avoid error messages during VM boot
  - security updates applied
- vloop-vnf-ubuntu-14.04\_20151216
  - version with development tools required for build of DPDK and l2fwd

## 1.5 Other Requirements

The test suite requires Python 3.3 and relies on a number of other packages. These need to be installed for the test suite to function.

Installation of required packages, preparation of Python 3 virtual environment and compilation of OVS, DPDK and QEMU is performed by script **systems/build\_base\_machine.sh**. It should be executed under user account, which will be used for vsperf execution.

**Please Note:** Password-less sudo access must be configured for given user account before script is executed.

Execution of installation script:

```
$ cd systems
$ ./build_base_machine.sh
```

**Please Note:** you don't need to go into any of the systems subdirectories, simply run the top level **build\_base\_machine.sh**, your OS will be detected automatically.

Script **build\_base\_machine.sh** will install all the vsperf dependencies in terms of system packages, Python 3.x and required Python modules. In case of CentOS 7 it will install Python 3.3 from an additional repository provided by Software Collections ([a link](#)). In case of RedHat 7 it will install Python 3.4 as an alternate installation in /usr/local/bin. Installation script will also use **virtualenv** to create a vsperf virtual environment, which is isolated from the default Python environment. This environment will reside in a directory called **vsperfenv** in \$HOME.

You will need to activate the virtual environment every time you start a new shell session. Its activation is specific to your OS:

### 1.5.1 CentOS 7

```
$ scl enable python33 bash
$ cd $HOME/vsperfenv
$ source bin/activate
```

### 1.5.2 Fedora, RedHat and Ubuntu

```
$ cd $HOME/vsperfenv
$ source bin/activate
```

### 1.5.3 Working Behind a Proxy

If you're behind a proxy, you'll likely want to configure this before running any of the above. For example:

```
export http_proxy=proxy.mycompany.com:123
export https_proxy=proxy.mycompany.com:123
```

## 1.6 Hugepage Configuration

Systems running vsperf with either dpdk and/or tests with guests must configure hugepage amounts to support running these configurations. It is recommended to configure 1GB hugepages as the pagesize.

The amount of hugepages needed depends on your configuration files in vsperf. Each guest image requires 4096 by default according to the default settings in the `04_vnf.conf` file.

```
GUEST_MEMORY = ['4096', '4096']
```

The dpdk startup parameters also require an amount of hugepages depending on your configuration in the `02_vswitch.conf` file.

```
VSWITCHD_DPDK_ARGS = ['-c', '0x4', '-n', '4', '--socket-mem 1024,1024']
VSWITCHD_DPDK_CONFIG = {
    'dpdk-init' : 'true',
    'dpdk-lcore-mask' : '0x4',
    'dpdk-socket-mem' : '1024,1024',
}
```

Note: Option `VSWITCHD_DPDK_ARGS` is used for `vswitchd`, which supports `-dpdk` parameter. In recent `vswitchd` versions, option `VSWITCHD_DPDK_CONFIG` will be used to configure `vswitchd` via `ovs-vsctl` calls.

With the `--socket-mem` argument set to use 1 hugepage on the specified sockets as seen above, the configuration will need 9 hugepages total to run all tests within vsperf if the pagesize is set correctly to 1GB.

Depending on your OS selection configuration of hugepages may vary. Please refer to your OS documentation to set hugepages correctly. It is recommended to set the required amount of hugepages to be allocated by default on reboots.

Information on hugepage requirements for dpdk can be found at [http://dpdk.org/doc/guides/linux\\_gsg/sys\\_reqs.html](http://dpdk.org/doc/guides/linux_gsg/sys_reqs.html)

You can review your hugepage amounts by executing the following command

```
cat /proc/meminfo | grep Huge
```





## ‘VSPERF’ TRAFFIC GEN GUIDE

### 2.1 Overview

VSPERF supports the following traffic generators:

- Dummy (DEFAULT): Allows you to use your own external traffic generator.
- IXIA (IxNet and IxOS)
- Spirent TestCenter
- Xena Networks

To see the list of traffic gens from the cli:

```
$ ./vsperf --list-trafficgens
```

This guide provides the details of how to install and configure the various traffic generators.

### 2.2 Background Information

The traffic default configuration can be found in `tools/pkt_gen/trafficgen/trafficgenhelper.py`, and is configured as follows:

```
TRAFFIC_DEFAULTS = {
    '12': {
        'framesize': 64,
        'srcmac': '00:00:00:00:00:00',
        'dstmac': '00:00:00:00:00:00',
    },
    '13': {
        'proto': 'tcp',
        'srcip': '1.1.1.1',
        'dstip': '90.90.90.90',
    },
    '14': {
        'srcport': 3000,
        'dstport': 3001,
    },
    'vlan': {
        'enabled': False,
        'id': 0,
        'priority': 0,
        'cfi': 0,
    }
}
```

```
    },  
  }  
}
```

The framesize paramter can be overridden from the configuration files by adding the following to your custom configuration file `10_custom.conf`:

```
TRAFFICGEN_PKT_SIZES = (64, 128,)
```

OR from the commandline:

```
$ ./vsperf --test-params "pkt_sizes=x,y" $TESTNAME
```

You can also modify the traffic transmission duration and the number of trials run by the traffic generator by extending the example commandline above to:

```
$ ./vsperf --test-params "pkt_sizes=x,y;duration=10;rfc2455_trials=3" $TESTNAME
```

## 2.3 Dummy Setup

To select the Dummy generator please add the following to your custom configuration file `10_custom.conf`.

```
TRAFFICGEN = 'Dummy'
```

OR run `vsperf` with the `--trafficgen` argument

```
$ ./vsperf --trafficgen Dummy $TESTNAME
```

Where `$TESTNAME` is the name of the `vsperf` test you would like to run. This will setup the vSwitch and the VNF (if one is part of your test) print the traffic configuration and prompt you to transmit traffic when the setup is complete.

Please send 'continuous' traffic with the following stream config:

30mS, 90mpps, multistream False

and the following flow config:

```
{  
  "flow_type": "port",  
  "l3": {  
    "srcip": "1.1.1.1",  
    "proto": "tcp",  
    "dstip": "90.90.90.90"  
  },  
  "traffic_type": "continuous",  
  "multistream": 0,  
  "bidir": "True",  
  "vlan": {  
    "cfi": 0,  
    "priority": 0,  
    "id": 0,  
    "enabled": false  
  },  
  "frame_rate": 90,  
  "l2": {  
    "dstport": 3001,  
    "srcport": 3000,  
    "dstmac": "00:00:00:00:00:00",  
    "srcmac": "00:00:00:00:00:00",  
    "framesize": 64  
  }  
}
```

```
}  
What was the result for 'frames tx'?
```

When your traffic gen has completed traffic transmission and provided the results please input these at the vsperf prompt. vsperf will try to verify the input:

```
Is '$input_value' correct?
```

Please answer with y OR n.

**VPSERF will ask you for:**

- Result for 'frames tx'
- Result for 'frames rx'
- Result for 'min latency'
- Result for 'max latency'
- Result for 'avg latency'

Finally vsperf will print out the results for your test and generate the appropriate logs and csv files.

## 2.4 IXIA Setup

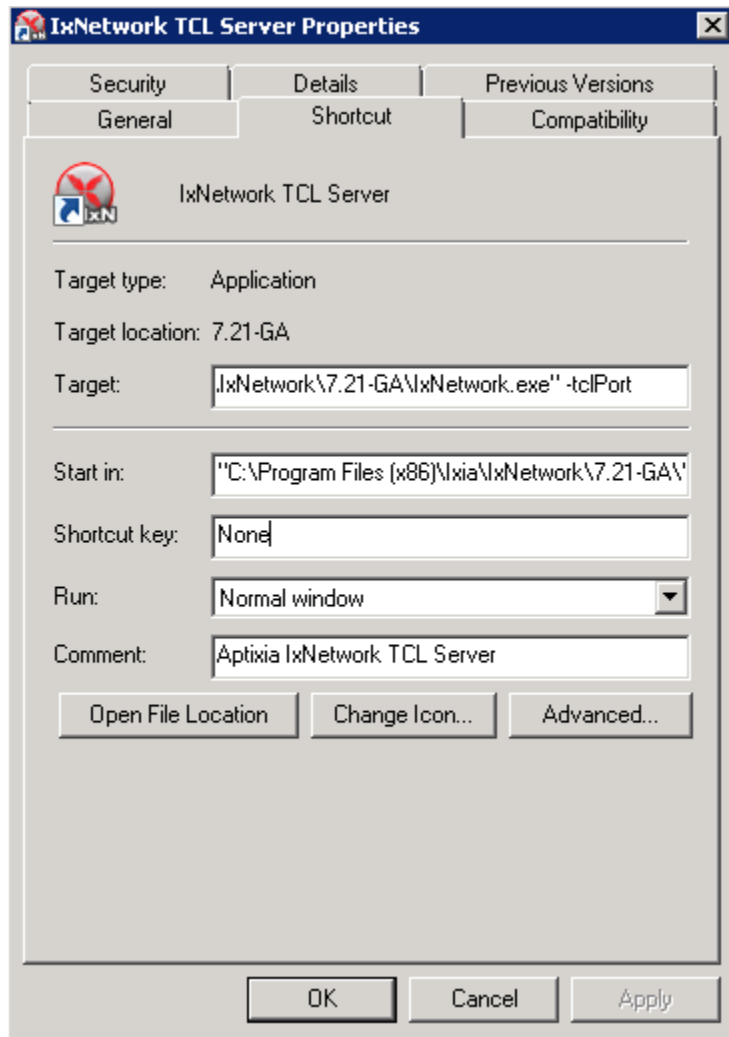
### 2.4.1 On the CentOS 7 system

You need to install IxNetworkTclClient\$(VER\_NUM)Linux.bin.tgz.

### 2.4.2 On the IXIA client software system

Find the IxNetwork TCL server app (start -> All Programs -> IXIA -> IxNetwork -> IxNetwork\_\$(VER\_NUM) -> IxNetwork TCL Server)

Right click on IxNetwork TCL Server, select properties - Under shortcut tab in the Target dialogue box make sure there is the argument “-tclport xxxx” where xxxx is your port number (take note of this port number you will need it for the 10\_custom.conf file).



Hit Ok and start the TCL server application

## 2.5 Spirent Setup

Spirent installation files and instructions are available on the Spirent support website at:

<http://support.spirent.com>

Select a version of Spirent TestCenter software to utilize. This example will use Spirent TestCenter v4.57 as an example. Substitute the appropriate version in place of 'v4.57' in the examples, below.

### 2.5.1 On the CentOS 7 System

Download and install the following:

Spirent TestCenter Application, v4.57 for 64-bit Linux Client

## 2.5.2 Spirent Virtual Deployment Service (VDS)

Spirent VDS is required for both TestCenter hardware and virtual chassis in the vsperf environment. For installation, select the version that matches the Spirent TestCenter Application version. For v4.57, the matching VDS version is 1.0.55. Download either the ova (VMware) or qcow2 (QEMU) image and create a VM with it. Initialize the VM according to Spirent installation instructions.

## 2.5.3 Using Spirent TestCenter Virtual (STCv)

STCv is available in both ova (VMware) and qcow2 (QEMU) formats. For VMware, download:

Spirent TestCenter Virtual Machine for VMware, v4.57 for Hypervisor - VMware ESX.ESXi

Virtual test port performance is affected by the hypervisor configuration. For best practice results in deploying STCv, the following is suggested:

- Create a single VM with two test ports rather than two VMs with one port each
- Set STCv in DPDK mode
- Give STCv  $2*n + 1$  cores, where  $n$  = the number of ports. For vsperf, cores = 5.
- Turning off hyperthreading and pinning these cores will improve performance
- Give STCv 2 GB of RAM

To get the highest performance and accuracy, Spirent TestCenter hardware is recommended. vsperf can run with either stype test ports.

## 2.5.4 Using STC REST Client

The stcrestclient package provides the stchttp.py ReST API wrapper module. This allows simple function calls, nearly identical to those provided by StcPython.py, to be used to access TestCenter server sessions via the STC ReST API. Basic ReST functionality is provided by the resthttp module, and may be used for writing ReST clients independent of STC.

- Project page: <<https://github.com/Spirent/py-stcrestclient>>
- Package download: <<http://pypi.python.org/pypi/stcrestclient>>

To use REST interface, follow the instructions in the Project page to install the package. Once installed, the scripts named with 'rest' keyword can be used. For example: testcenter-rfc2544-rest.py can be used to run RFC 2544 tests using the REST interface.

## 2.6 Xena Networks

### 2.6.1 Installation

Xena Networks traffic generator requires certain files and packages to be installed. It is assumed the user has access to the Xena2544.exe file which must be placed in VSPerf installation location under the tools/pkt\_gen/xena folder. Contact Xena Networks for the latest version of this file. The user can also visit [www.xenanetworks.com/downloads](http://www.xenanetworks.com/downloads) to obtain the file with a valid support contract.

To execute the Xena2544.exe file under Linux distributions the mono-complete package must be installed. To install this package follow the instructions below. Further information can be obtained from <http://www.mono-project.com/docs/getting-started/install/linux/>

```
rpm --import "http://keyserver.ubuntu.com/pks/lookup?op=get&search=0x3FA7E0328081BFF6A14DA29AA6A19B3"
yum-config-manager --add-repo http://download.mono-project.com/repo/centos/
yum -y install mono-complete
```

To prevent gpg errors on future yum installation of packages the mono-project repo should be disabled once installed.

```
yum-config-manager --disable download.mono-project.com_repo_centos_
```

### 2.6.2 Configuration

Connection information for your Xena Chassis must be supplied inside the `10_custom.conf` or `03_custom.conf` file. The following parameters must be set to allow for proper connections to the chassis.

```
TRAFFICGEN_XENA_IP = ''
TRAFFICGEN_XENA_PORT1 = ''
TRAFFICGEN_XENA_PORT2 = ''
TRAFFICGEN_XENA_USER = ''
TRAFFICGEN_XENA_PASSWORD = ''
TRAFFICGEN_XENA_MODULE1 = ''
TRAFFICGEN_XENA_MODULE2 = ''
```